

Open up Digimap. When you login with the username, make sure you use capital letters and type the letter o not zero!

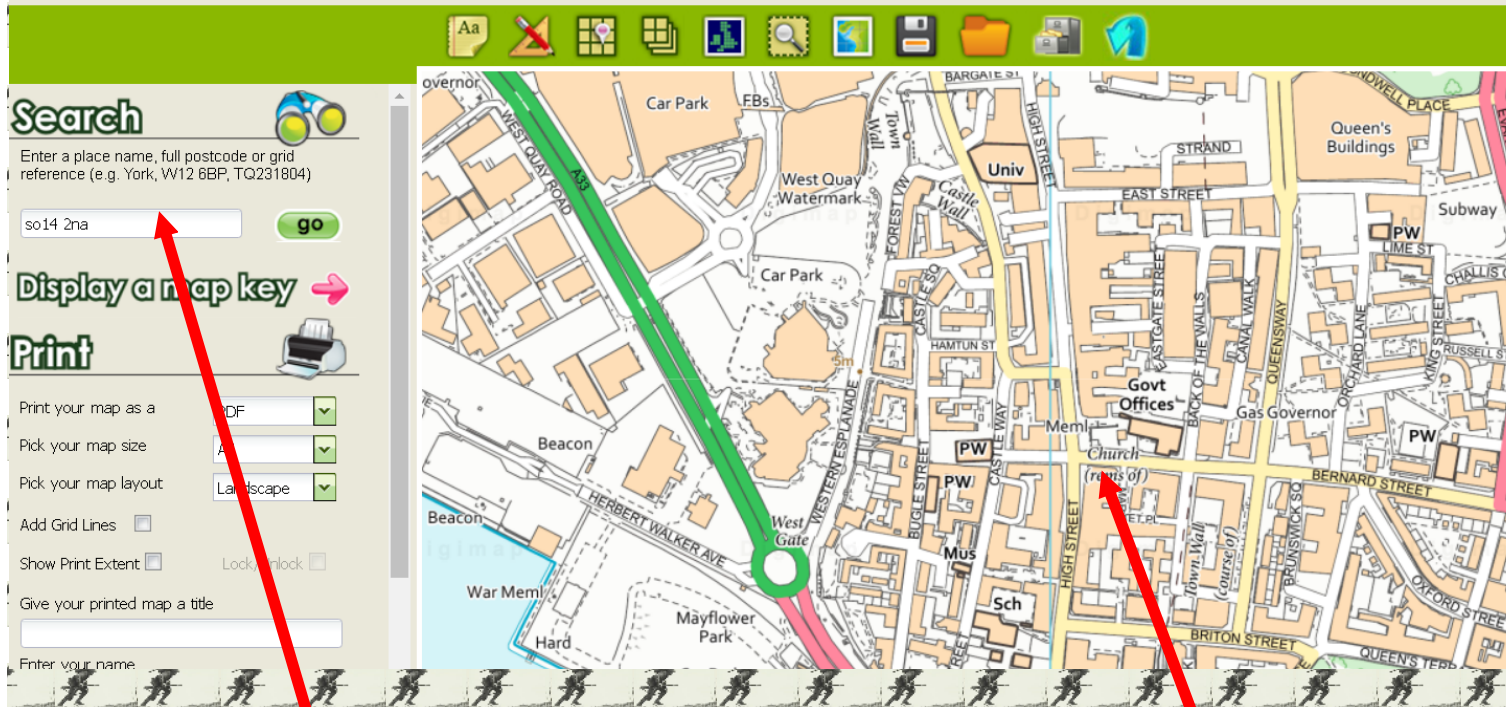
The password is:



Decide which map you want to use. You can move the tab along to show different maps from different year.

What happens when you move it half way?

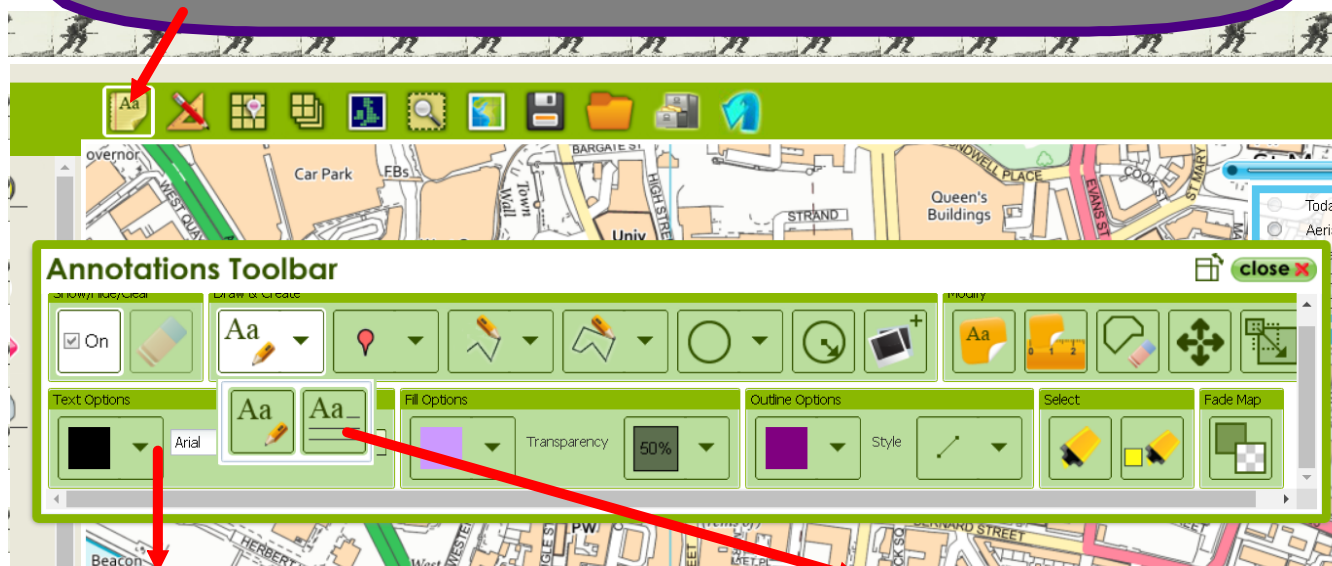
Why could this be useful?



Search for the locations.

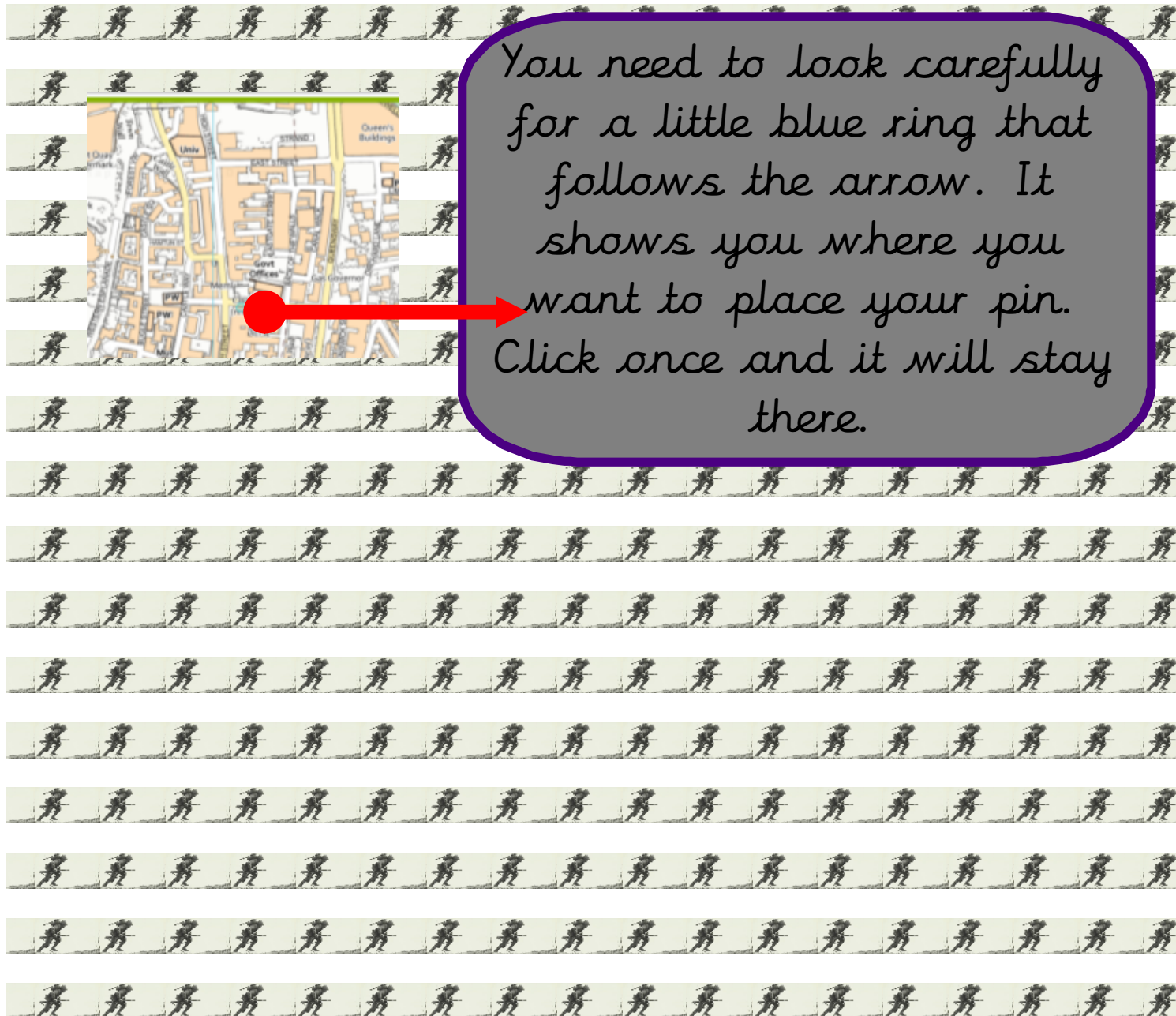
Look for the road and  
any clues that might  
show you exactly where  
your location is.  
In this case it says  
Church (remains of)

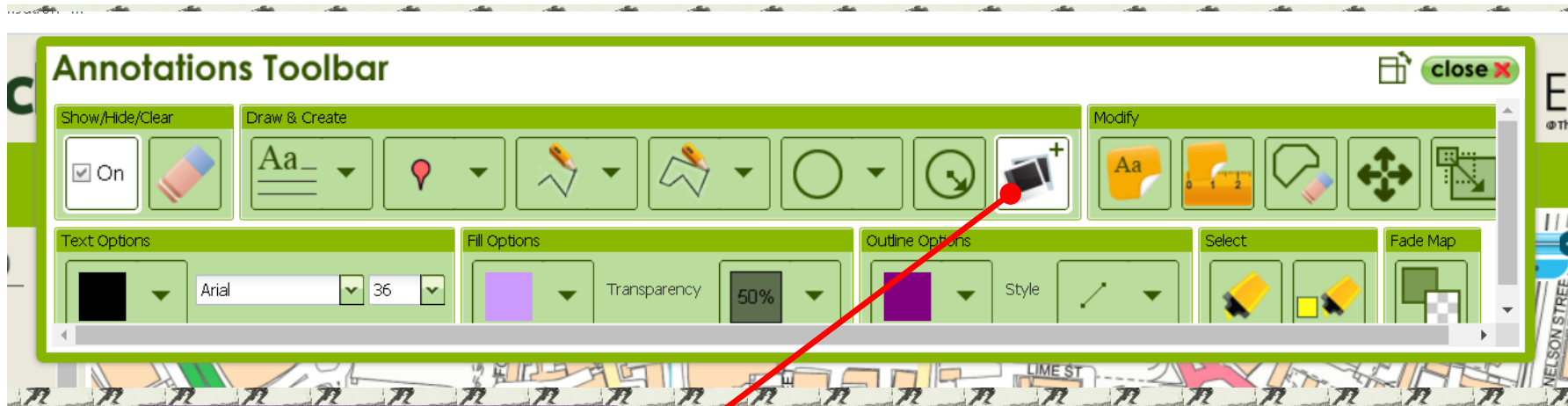
You need to use the Annotation tool so you can add labels and any extra information that you think is important.



Remember you can change the *colour* and *font size* but you have to change this *first*.

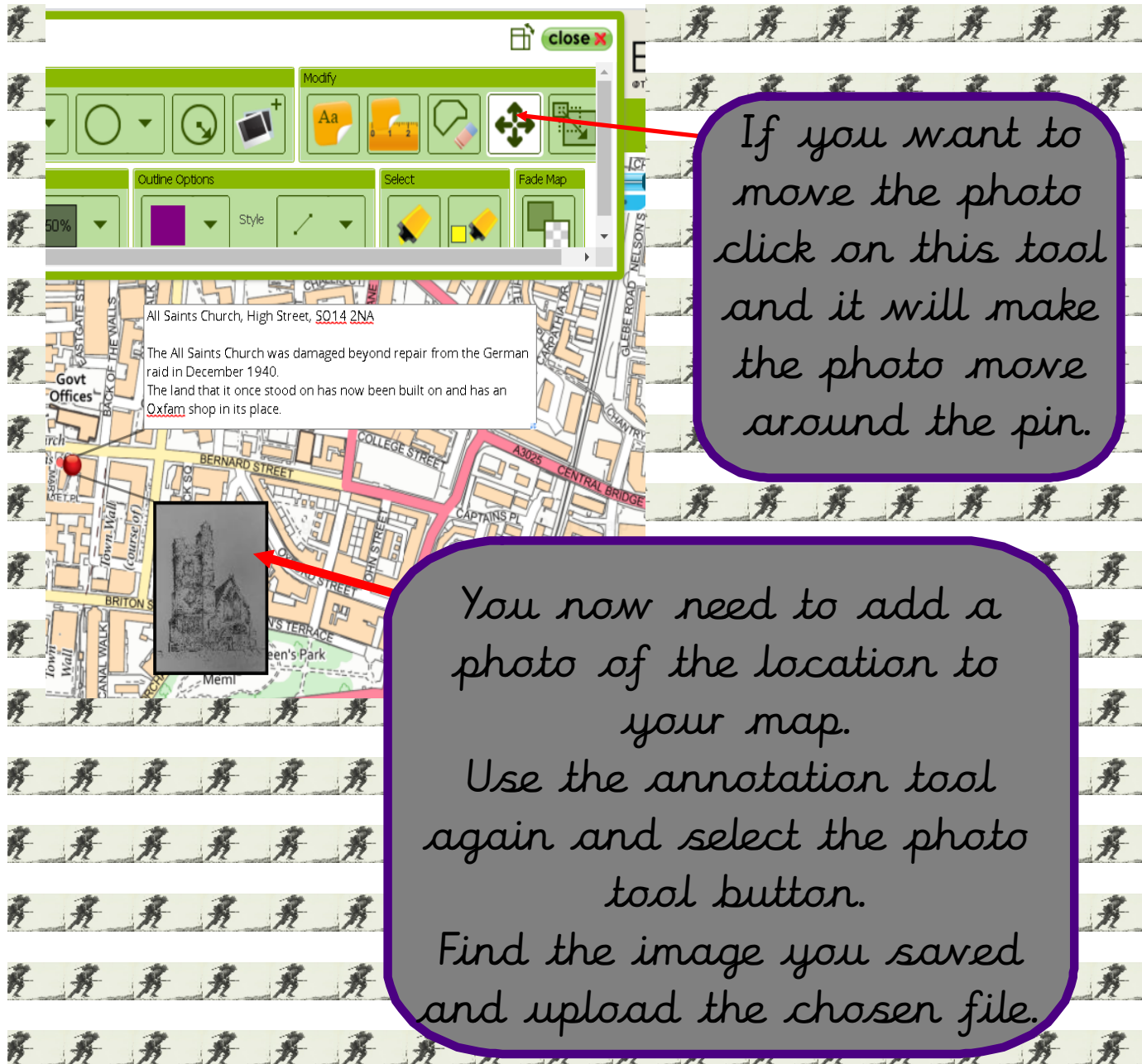
Select this Annotation Tool so that you are able to type a larger amount of writing.



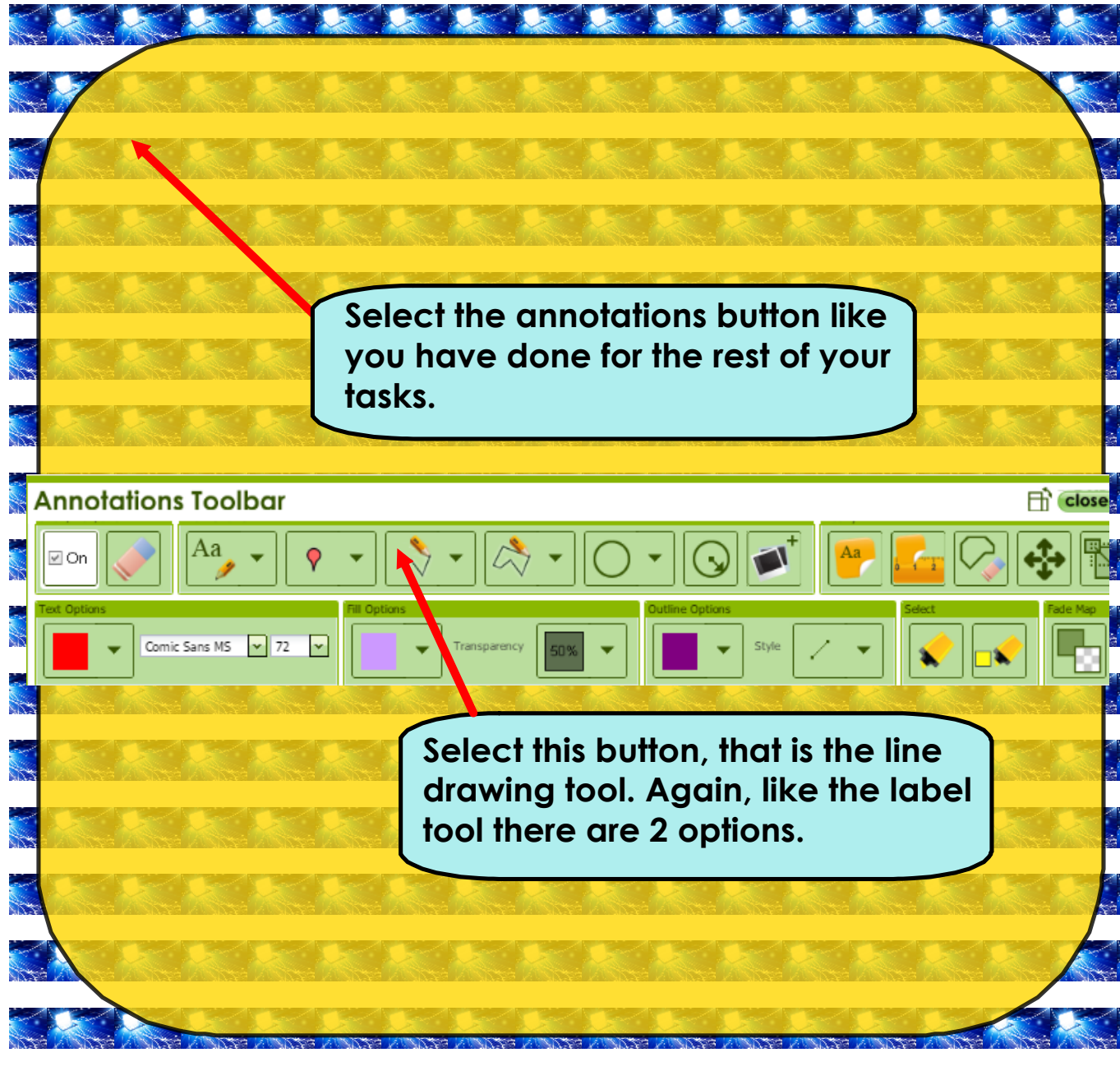


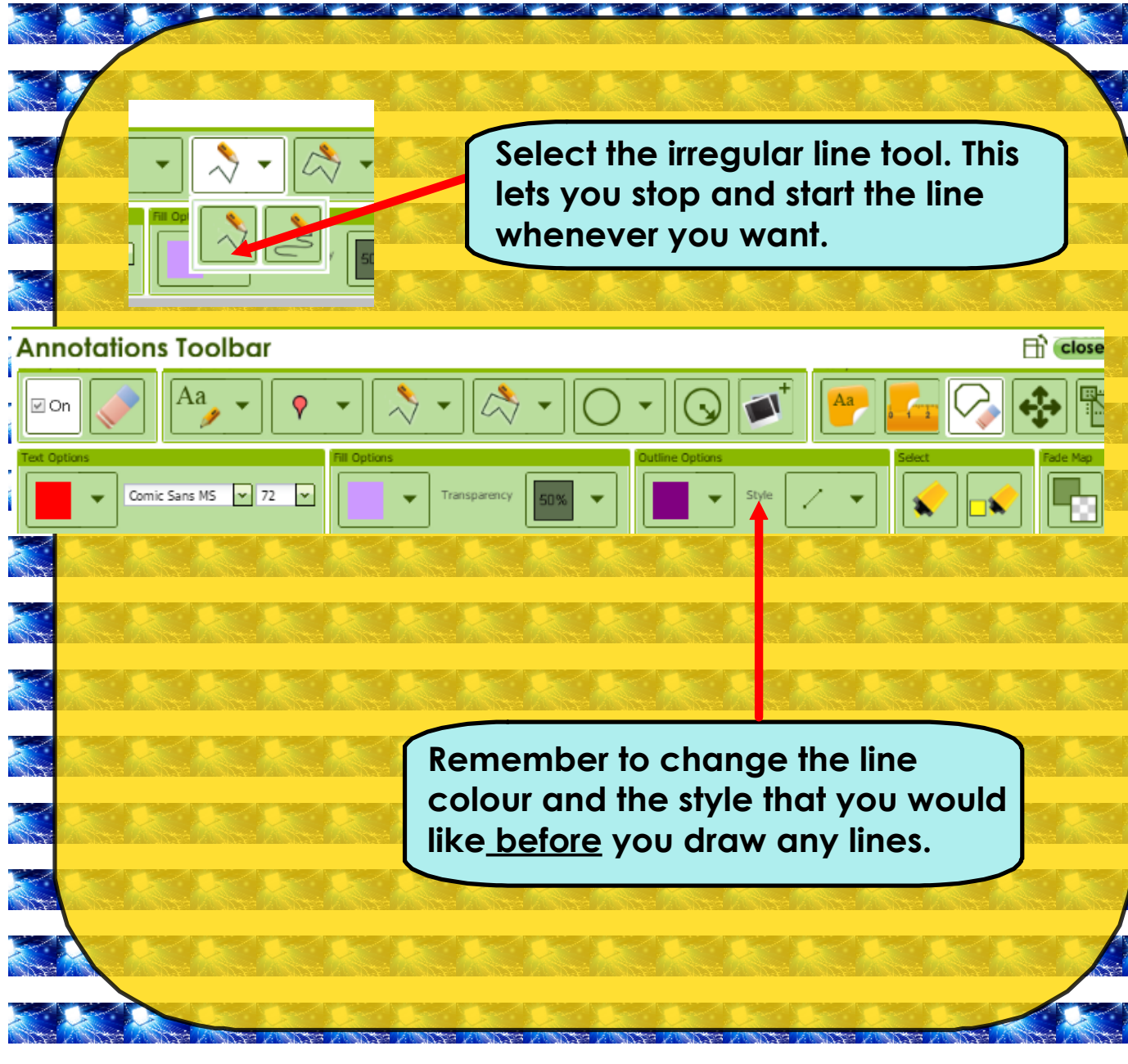
You now need to add a photo of the location to your map. Use the annotation tool again and select the photo tool button.

Look for the blue ring again which will show you where you will place the photo.



Complete these steps 3 more times so you have a photo and information about each of the locations you have been given.





The image shows a screenshot of the Digimap Annotations Toolbar. A yellow rounded rectangle highlights a section of the toolbar. Inside this rectangle, a red arrow points to the 'Irregular Line' tool icon (a line with a wavy, irregular shape). A light blue callout box with a black border contains the text: "Select the irregular line tool. This lets you stop and start the line whenever you want." Below this, another red arrow points to the 'Style' dropdown menu in the 'Outline Options' section of the toolbar. A second light blue callout box with a black border contains the text: "Remember to change the line colour and the style that you would like before you draw any lines." The toolbar itself includes various icons for text, fill, and line tools, as well as configuration options for text (font, size), fill (color, transparency), and outline (color, style).

Select the irregular line tool. This lets you stop and start the line whenever you want.

Annotations Toolbar

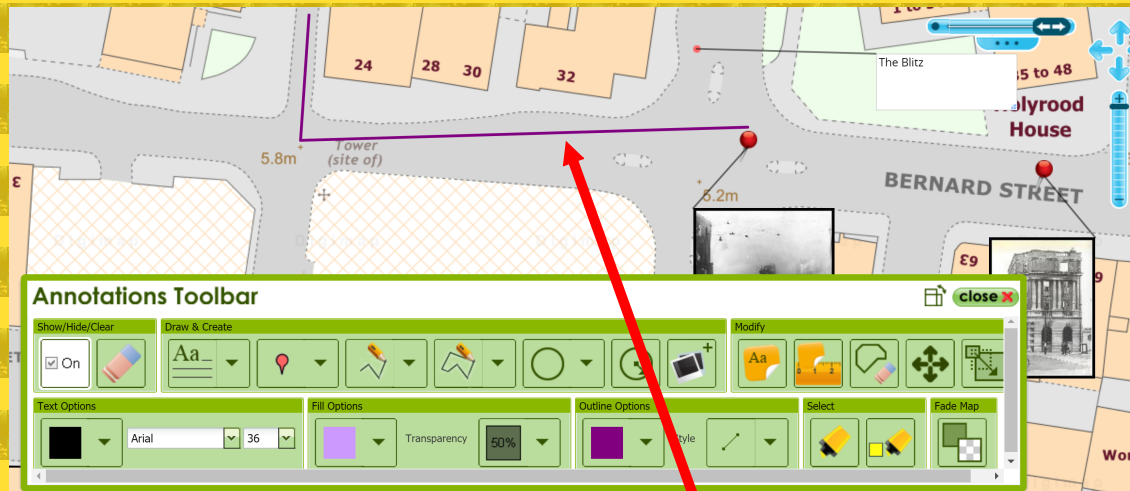
Text Options: ☒ On, Aa, Comic Sans MS, 72

Fill Options: ☐ Fill Op, Transparency 50%

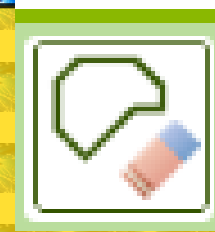
Outline Options: ☐ Outline, Style

Select: ☐ Select, Fade Map

Remember to change the line colour and the style that you would like before you draw any lines.

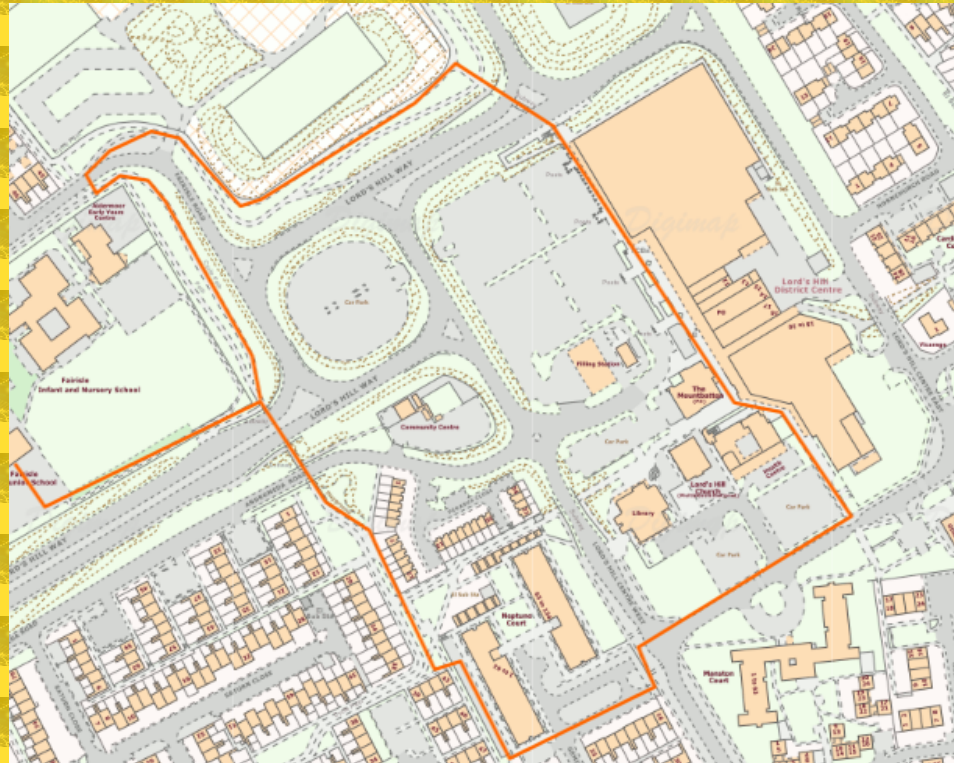


**You will see a light blue dot appear. Select where you want to start your route and click once. This will start the route. Move the mouse where you want draw your straight line to and click once again to stop the line. To change direction you just move the mouse the direction you want the line to go. To stop the line double click and it will change to the colour you have selected.**



**To delete a line you  
have drawn you need to  
use the same delete  
tool as before.**

**Your route map should look something like this with labels!**



**Take care to make sure you are accurate with your directions. Follow the path and change direction with the path.**