

LO. I am learning to
use dialogue.



What is dialogue?

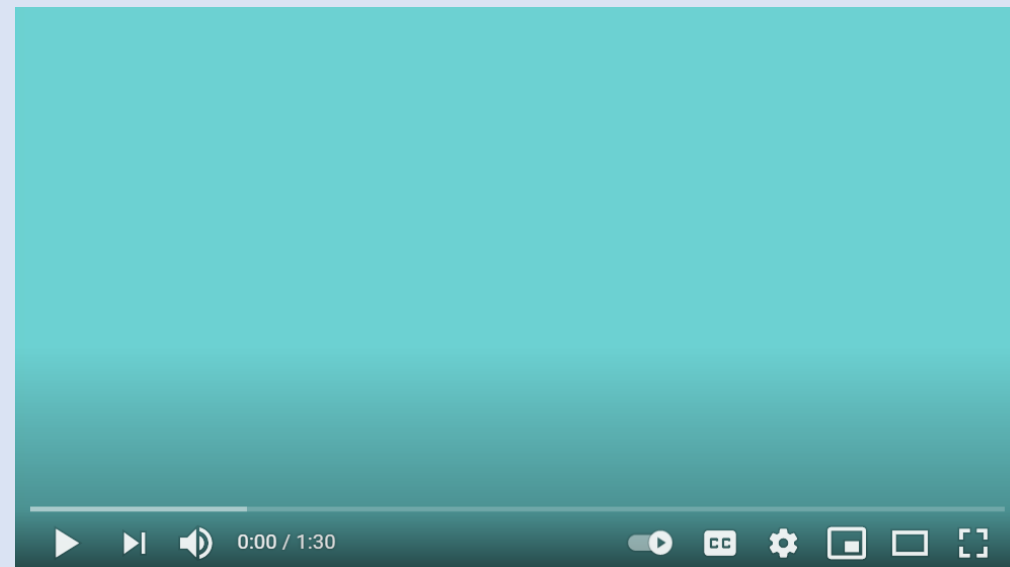
Dialogue is what happens when two or more characters speak to one another.

Why do we use dialogue?

Dialogue can move a narrative on, develop character or create tension.

Watch these videos to revise how to write
speech down.

Click on the images to open the links.



Golden Rules of Dialogue

1. All dialogue must be contained in speech marks.

We call these inverted commas.

2. Before the end of the inverted commas, you must add punctuation (, ! ? .)

3. When a new person is speaking you must start a new line.

4. Include who said what and how they said it.

Look at the conversation between Spongebob and Patrick.



What do you learn about:

1. The relationship between the two characters?
2. What is happening in the plot of the story?
3. How the characters are feeling?



In a story, dialogue should do one, if not all, of the following:

1. Reveal characters' relationships to one another.
2. Move the story forward.
3. Increase the tension.

Don't put it in unless it is doing one of these things!

Look at how the conversation between Spongebob and Patrick could be written in a narrative.



Patrick glared at Spongebob and shouted, “Well, at least I don’t polish my fingernails.”

“You take that back!” Spongebob demanded, pointing his finger at Patrick.

“Fingernails! Fingernails! Fingernails!” Patrick sang mockingly. Angrily, Spongebob shouted, “You don’t even have fingernails.”

“I cannot believe what I am hearing!” Patrick bellowed.

“How can you hear it? You don’t have ears either!” replied Spongebob, throwing his hands in the air.

Try to use a range of 'said' words when using dialogue.

Admitted

Agreed

Answered

Asked

Begged

Barked

Bellowed

Complained

Confessed

Cried

Demanded

Giggled

Howled

Interrupted

Laughed

Mumbled

Muttered

Pleaded

Questioned

Replied

Requested

Roared

Screamed

Shouted

Sighed

Snarled

Sobbed

Whimpered

Whined

Whispered

Task

Write a conversation between Spongebob and Patrick for this picture. Make sure you follow the Golden Rules of dialogue.

1. All dialogue must be contained in speech marks. We call these inverted commas.
2. Before the end of the inverted commas, you must add punctuation (, ! ? .)
3. When a new person is speaking you must start a new line.
4. Include who said what and how they said it.



Last week you learnt about the life of Captain Sir Tom Moore. This week, you are going to use this information to write a story featuring Captain Sir Tom.



1) Choose a part of Captain Tom's life to set your story: early life, during his career (in the army or at the concrete company), or later life. You may want to look back to your notes to help you decide.

2) Captain Sir Tom Moore will be the main character in your story, but you could include others if you wish.

3) Decide what will happen to Captain Tom in your story - this part does not need to be factual, so you can be creative with your storyline (but not so creative that the story doesn't make sense!).



You will be planning your narrative properly later in the week but just start thinking of some ideas at this point. You may want to note them down so you don't forget!