

Understand

Change these examples of direct speech into reported speech.

- Tia asked when lunch would be ready.

- Jim told me that it was raining outside.

- Aunt Jo explained that the paint needed to dry before we could sit on the bench.

15-Minute Direct Speech Challenge!

Challenge

Can you write a sentence about each picture which includes *direct speech*? Make sure to include all of the *punctuation* needed.





Test

Tick the sentence which is *punctuated correctly*.

- ☐ Bina asked "Are you going to the park tonight?"
- ☐ "Where is the post office?," asked Jim.
- ☐ "It's time we found the car," said Mr. Turner.
"We need to go home."
- ☐ "Today's lesson is on colour mixing." said Mr. Turner.

Add the *missing commas* to these sentences.

- Sunil said "I can't find my phone."
- "It's nearly lunchtime" said Bina.
- "I'm waiting" said Jim "for the next train to arrive."

Add the *missing punctuation* to these sentences.

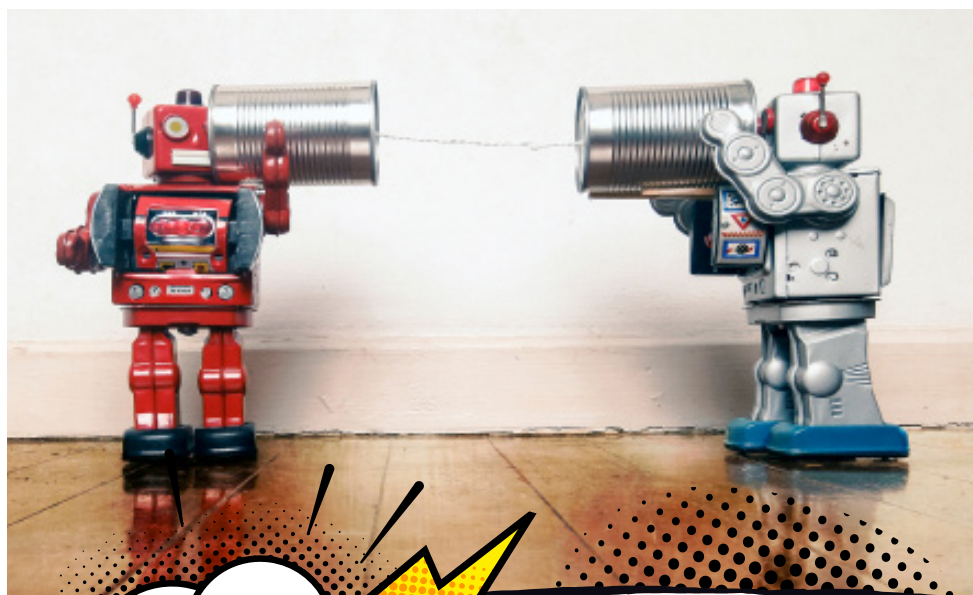
- It's time to go in. It's getting dark said Mike.
- Mike said it's time to go in. It's getting dark.
- It's time to go in said Mike it's getting dark.

Explain

Using your own words, explain all of the *punctuation* that is needed when writing direct speech.

Apply

What do your toys do when you're not looking? Think about the games or toys you've left at home. Imagine if they could talk, and write the conversation they are having right now. Remember to use all of the *correct punctuation*.



Extra challenge:

Try to change where you use the direct speech within a sentence. Can you start a sentence with a character's name or an adverb instead of inverted commas?

[illegible]