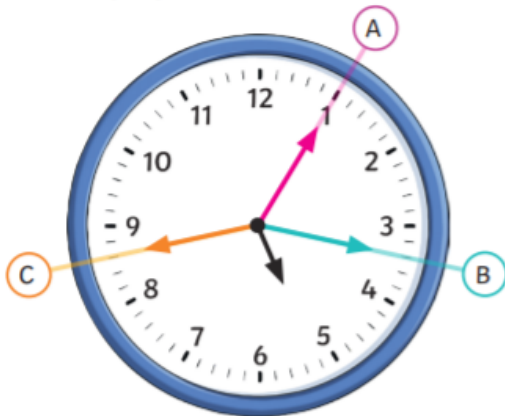




- 1) The time shows seventeen minutes past 5. Which minute hand is correctly positioned? Explain your answer fully.



---

---

---

---

- 2) Match the time in words to the correct clock face. Circle the time that is left over.



six minutes to 6



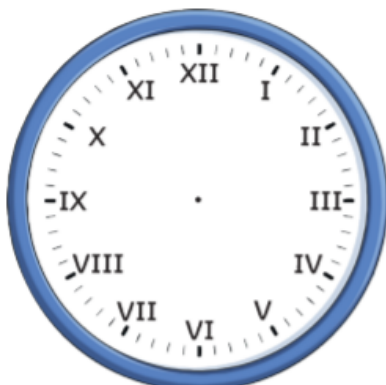
six minutes past 6

twenty-two minutes past 3

twenty-two minutes to 1



- 3) Jason needs to be at the park at half past 8. It takes him 19 minutes to walk there.



- a) Draw hour and minute hands on the clock face to show the exact time that Jason should leave home.

- b) If Jason stays at the park for 30 minutes, what time will he get home?

---