



Spelling Shed

Stage: 1

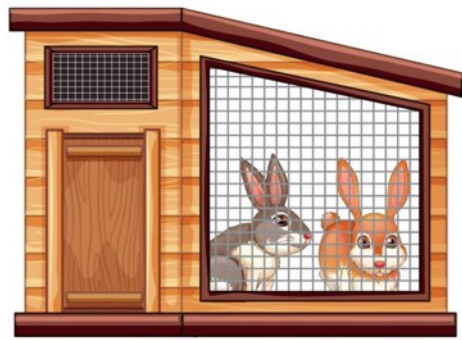
List: 3

Words ending '-tch'. The /ch/ sound is usually spelt as 'tch' when it comes after a single vowel letter.

What can you see? Write down
what these images are:



Spelling Shed



What can you see? Write down what these images are:

Answers:



Spelling Shed



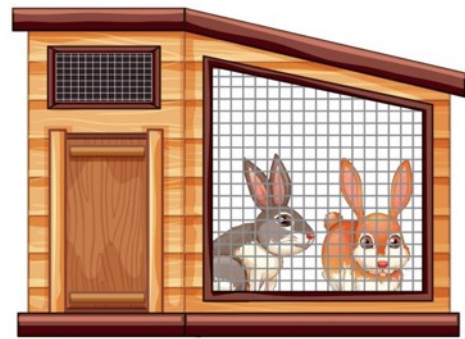
watch



kitchen



match



hutch



witch



Stage: 1	Words ending '-tch'. The /ch/ sound is usually spelt as 'tch' when it comes after a single vowel letter. Name:
List: 3	

Spellings	1 st Attempt	2 nd Attempt	3 rd Attempt	4 th Attempt	5 th Attempt
catch					
kitchen					
hutch					
ditch					
match					
fetch					
notch					
witch					
patch					
watch					



What is the rule?

- The /ch/ sound is usually spelt as -tch when it comes after one vowel letter. For example, catch