



Spelling Shed

Stage: 2

List: 1

The /j/ sound spelled -dge at the end of words. This spelling is used after the short vowel sounds



What is the rule?

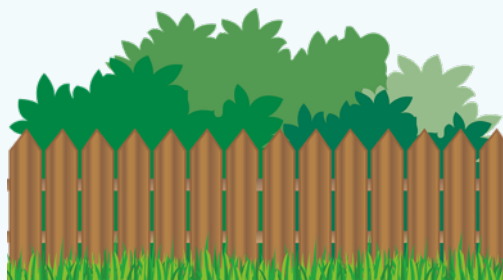
The /j/ sound is spelt -dge at the end of words. This spelling is used after the short vowel sounds.

For example: judge and badge.

What can you see? Write down
what these images are:



_ r _ d _ _



h _ d _ e



j u d _ _



w _ d _ _



l o _ _ _



_ a _ _ e



f r _ _ _ _

Answers:

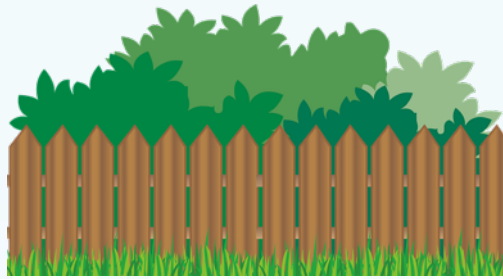
What can you see? Write down what these images are:



Spelling Shed



b r i d g e



h e d g e



j u d g e



w e d g e



l o d g e



b a d g e



f r i d g e



Stage: 2	The /j/ sound spelled -dge at the end of words.
List: 1	
Name:	

Spellings	1 st Attempt	2 nd Attempt	3 rd Attempt	4 th Attempt	5 th Attempt
badge					
edge					
bridge					
dodge					
fudge					
ridge					
smudge					
judge					
wedge					
lodge					

Stage: 2

The /j/ sound spelt -dge at the end of words.

List: 1

Name:



Spelling Shed

Spellings

badge

edge

bridge

dodge

fudge

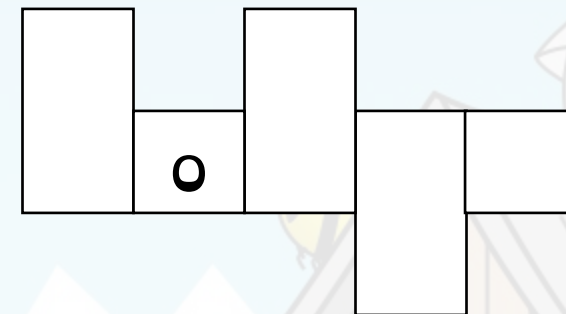
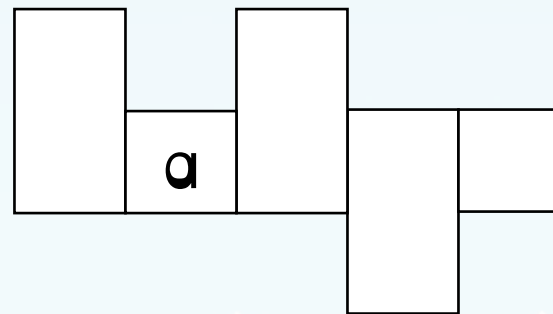
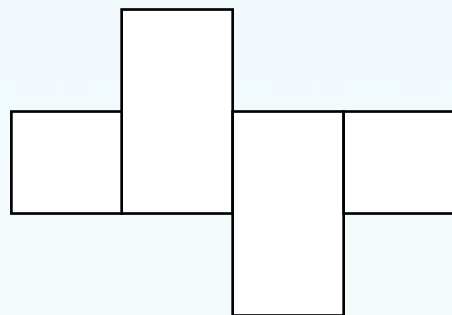
ridge

smudge

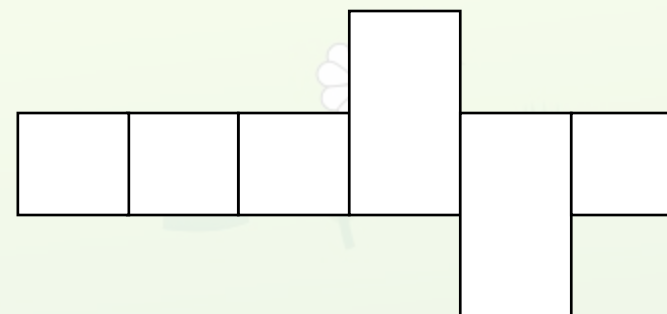
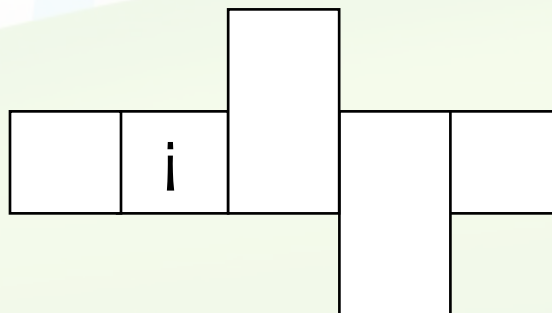
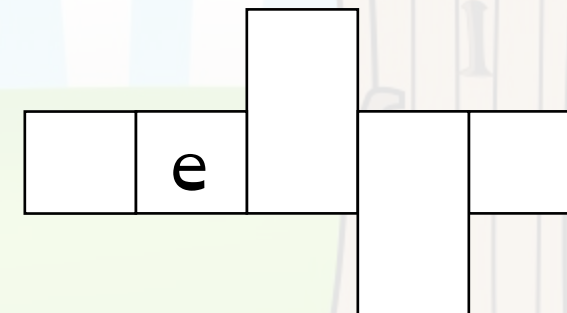
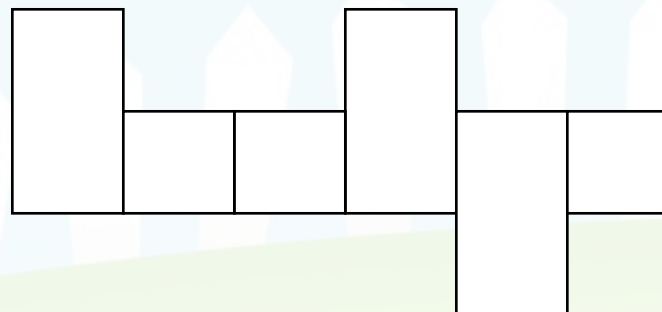
judge

wedge

lodge



Use your spellings to try and work out which words fit in the boxes.



Which words have been left out?

Stage: 2

The /j/ sound spelt -dge at the end of words.

List: 1

Answers:



Spelling Shed

Spellings

badge

edge

bridge

dodge

fudge

ridge

smudge

judge

wedge

lodge

e d g e

b a d g e

d o d g e

Use your spellings to try and work out which words fit in the boxes.

b r i d g e

w e d g e

r i d g e

s m u d g e

Which words have been left out?