



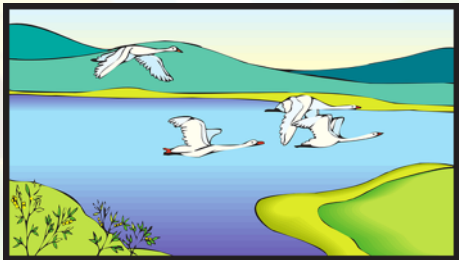
# Spelling Shed

Stage: 1

List: 11

The long vowel sound /a/ spelled with the split digraph a-e.

What can you see? Write down what these images are:



What can you see? Write down what these images are: **Answers:**



Spelling Shed



rake

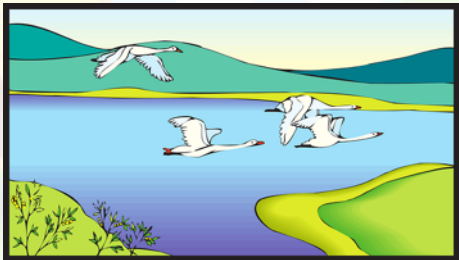


snowflake



plate

lake



grape



flame



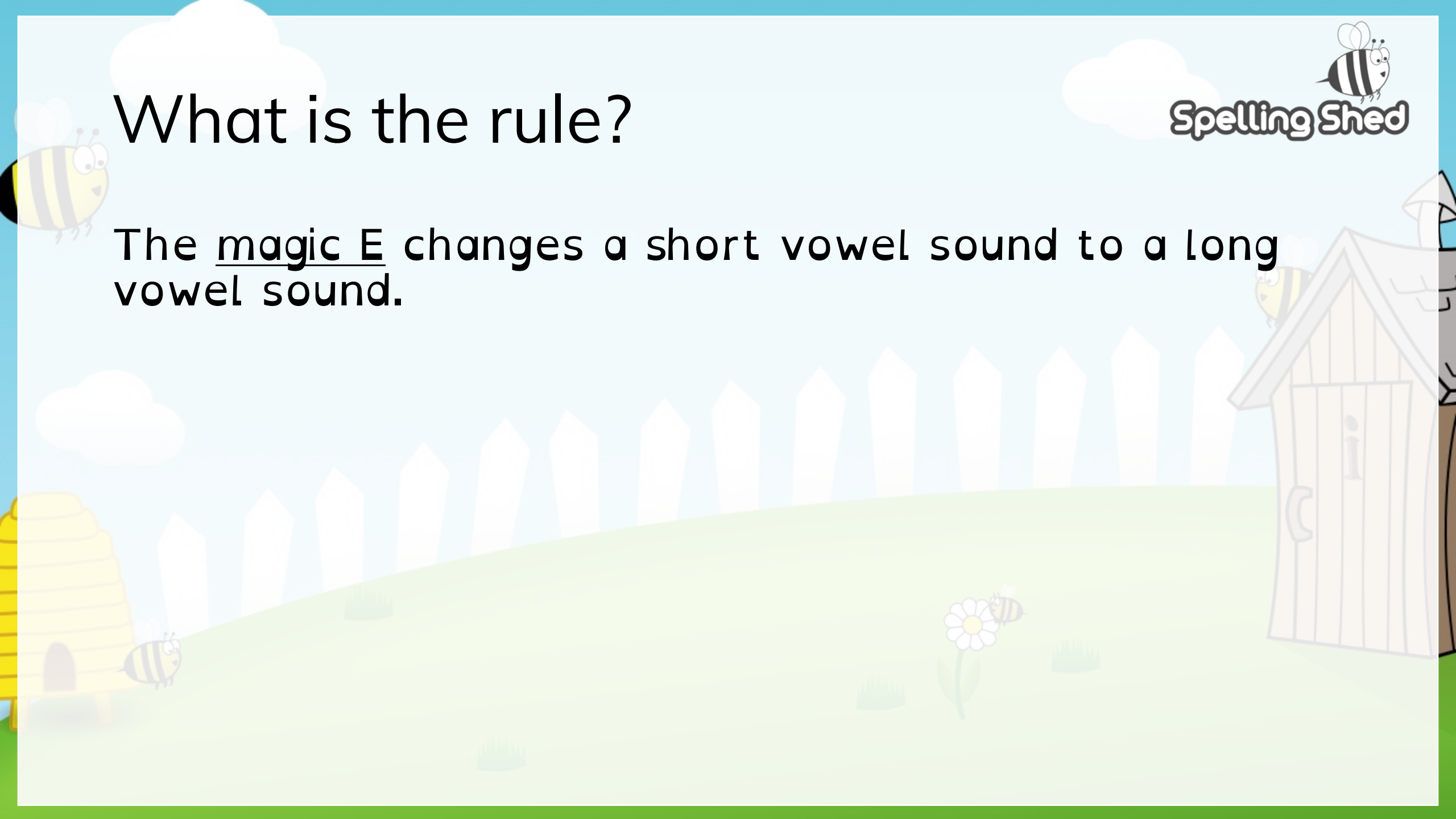
gate



Spelling Shed

# What is the rule?

The magic E changes a short vowel sound to a long vowel sound.





Stage: 1	The long vowel sound /a/ spelled with the split digraph a-e.
List: 11	
Name: _____	

Spellings	1 <sup>st</sup> Attempt	2 <sup>nd</sup> Attempt	3 <sup>rd</sup> Attempt	4 <sup>th</sup> Attempt	5 <sup>th</sup> Attempt
made					
same					
take					
plate					
mistake					
came					
rake					
safe					
awake					
snowflake					





Spelling Shed

Stage: 1

The long vowel sound /a/ spelled with the split digraph a-e.

List: 11

Name:

## Spellings

made

same

take

plate

mistake

came

rake

safe

awake

snowflake

He tidied the garden with a \_\_\_\_\_.

Their dinner was served on a \_\_\_\_\_.

The policeman made the children feel \_\_\_\_\_.

I made a \_\_\_\_\_ in my book.

My dad \_\_\_\_\_ a pizza for lunch.

My brother and I like the \_\_\_\_\_ things.

I like to \_\_\_\_\_ my teddy to bed.

My grandma \_\_\_\_\_ to visit at the weekend.

I was \_\_\_\_\_ early this morning.

A freezing cold \_\_\_\_\_ landed on my nose.

Insert a  
spelling  
into each  
sentence  
so that it  
makes  
sense.



Spelling Shed

Stage: 1

The long vowel sound /a/ spelled with the split digraph a-e.

List: 11

Name: **Answers:**

## Spellings

made

same

take

plate

mistake

came

rake

safe

awake

snowflake

He tidied the garden with a **\_rake\_**.

Their dinner was served on a **\_plate\_**.

The policeman made the children feel **\_safe\_**.

I made a **\_mistake\_** in my book.

My dad **\_made\_** a pizza for lunch.

My brother and I like the **\_same\_** things.

I like to **\_take\_** my teddy to bed.

My grandma **\_came\_** to visit at the weekend.

I was **\_awake\_** early this morning.

A freezing cold **\_snowflake\_** landed on my nose.

Insert a  
spelling  
into each  
sentence  
so that it  
makes  
sense.