

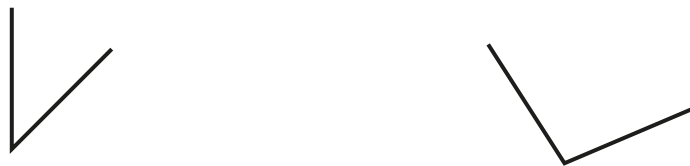
# Compare angles

1 Here are some angles.

a) Circle the angle that is greater than a right angle.



b) Circle the angle that is less than 90 degrees.



2 Draw three different angles that are less than a right angle.

Compare answers with a partner.

Complete the sentence.

These are all examples of \_\_\_\_\_ angles.



3 Draw two different obtuse angles.

Compare answers with a partner.

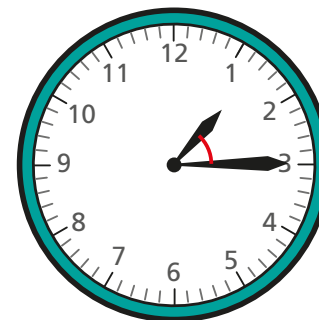
Complete the sentence.

Obtuse angles are greater than  degrees

but less than  degrees.

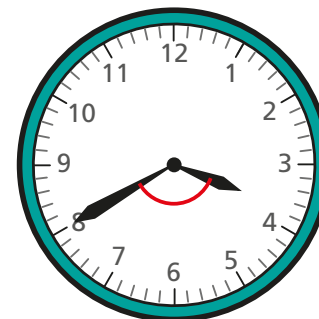
4 Is the angle between the hands of the clock acute or obtuse?

a)



\_\_\_\_\_

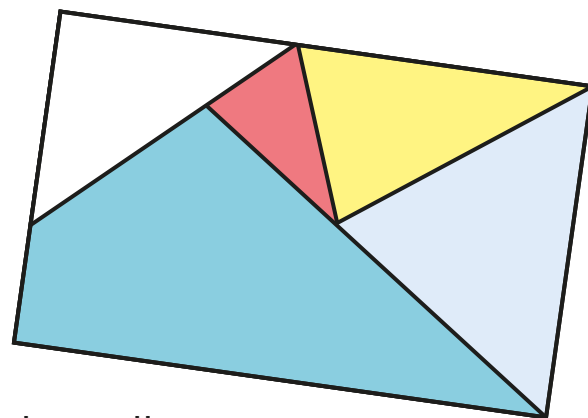
b)



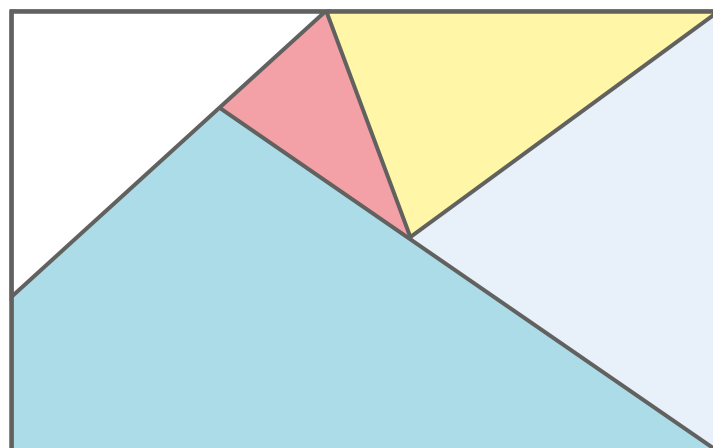
\_\_\_\_\_



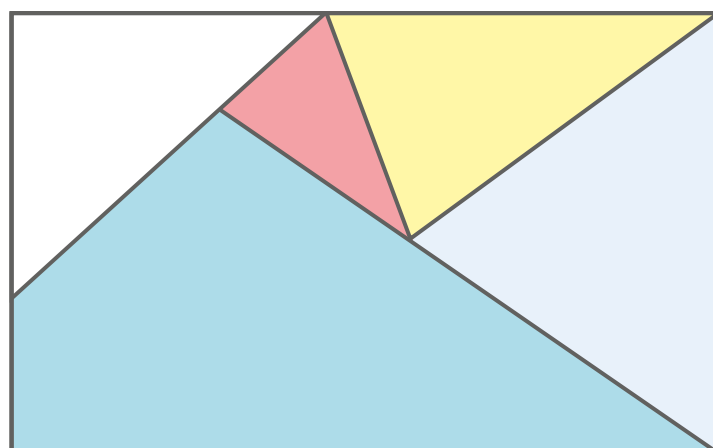
- 5 Here is a piece of wallpaper.



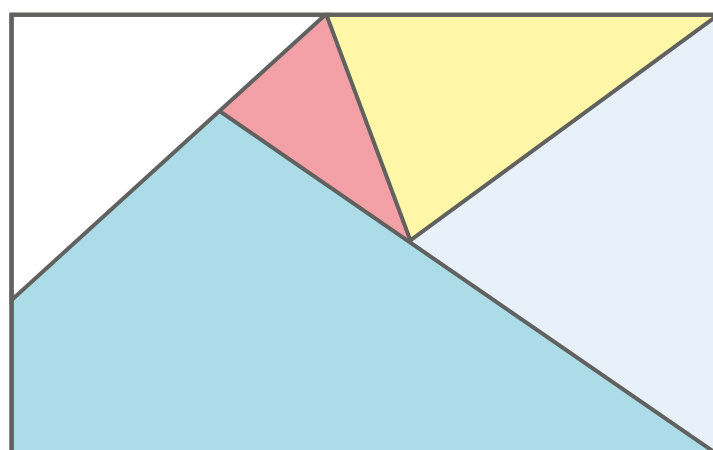
- a) Mark two right angles on the wallpaper.



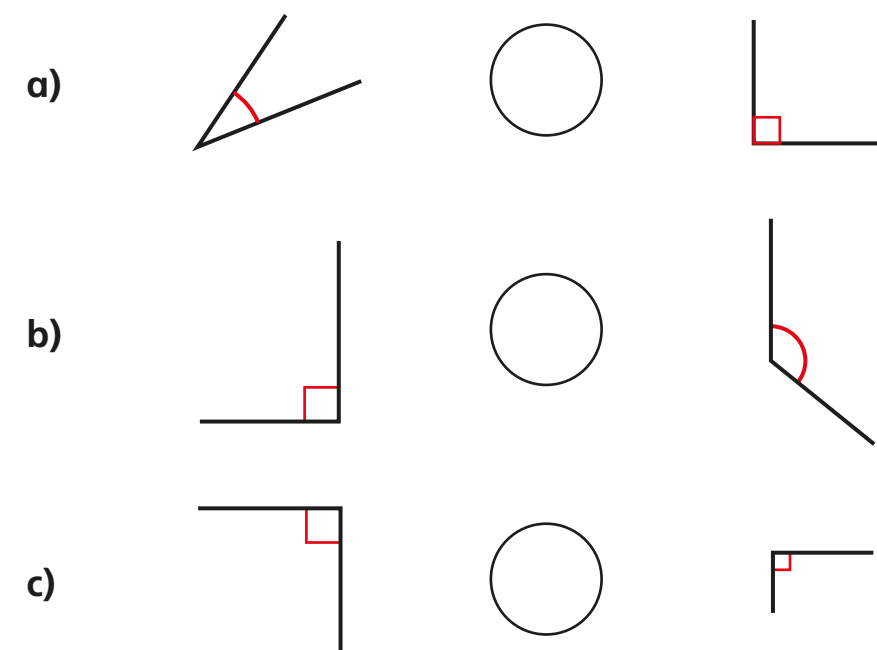
- b) Mark four acute angles on the wallpaper.



- c) Mark two obtuse angles on the wallpaper



- 6 Write  $<$ ,  $>$  or  $=$  to compare the sizes of the angles.



- 7 Draw a shape that has one right angle, two acute angles and one obtuse angle.



Compare answers with a partner.

What is the same and what is different about your shapes?

